

SNMPc Enterprise

"SNMPc Enterprise Edition's polling feature allows us to verify the availability and reachability of critical network components resulting in increased uptime/network availability"

Michael Innocentini - Ticketmaster

Visualize, monitor and pro-actively manage your network. SNMPc is a secure distributed network management system that will monitor your entire network infrastructure. With support for SNMP v3, IPv6, NetFlow add-ons, and unparalleled ease of use, it is easy to see why over 100,000 copies of SNMPc have been deployed.

Secure

Safely manage devices with SNMP V3 Authentication and Encryption. Tailor views and capabilities to each management user.

Scalable

Use distributed polling and server components for workgroup, large Intranet or Management Service Provider configurations.

Connected

Catch problems quickly with Email and Pager event notifications. Forward events to helpdesk or domain management systems.

Accessible

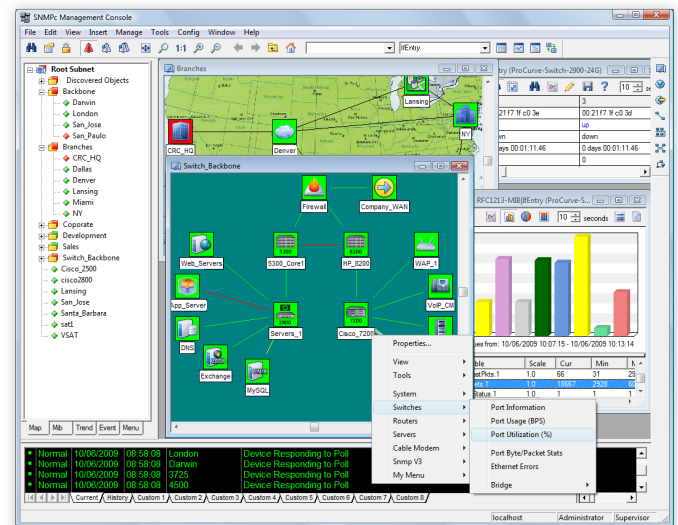
Monitor and manage your network from remote locations with the SNMPc Windows Client and SNMPc OnLine Web Interface.

Pro-Active

Monitor LAN/WAN performance and Service availability with scheduled WEB reports to effectively plan upgrades and reduce wasted bandwidth.

Integrated

Automatically export map topology, trend statistics, and event log entries to industry standard databases.



Multi-Vendor

View and modify standard and private information on routers, switches, servers and other devices from any vendor. Operates over IPv4 and IPv6.

Customizable

Simplify tasks with custom Expressions, Data Tables, and Menus. Develop Graphical Device Views with the BitView scripting tool and a variety of programming and scripting interfaces.



“Castle Rock’s depth of knowledge in the network arena is extremely impressive. With our OEM agreement in place, we are confident that we can now offer our customers the very best in network management functionality.”

Doug Elsley, ITSM Product Manager - Touchpaper Software plc.

SNMPc Enterprise

General Information



Feature Specification

Internet Addressing:	IPv4 and IPv6
SNMP Protocols:	V1, V2c, V3 with SHA/MD5, AES-128bit Authentication and DES Encryption
Device Discovery:	Automatically discovers and polls SNMP and ICMP (Ping) devices.
Service Discovery:	Performs service discovery on each device, including SNMP, ICMP, Telnet, FTP, HTTP, SMTP, and four user-specified TCP ports.
Service Polling:	Up to 16 user defined TCP ports per icon. Each with configurable send/reply string. External polling with custom applications
Topology Layout:	Multiple Level Hierarchies. Segmented by Polling Agent. Tree, Ring, or Snaked Bus networks.
Event Notification:	Ignore, Ignore Duplicates, Forward, Email, SMS, Display Alarm Box, or Execute Application.
Reporting:	Integrates with SNMPc OnLine web based reporting engine.
Backup:	Live/Standby server support with automated failover.
External Interfaces:	ODBC and Text Export. Event Forwarding using SNMP Traps.
Customization:	Private MIB Import. Custom Tables, Expressions, and Menus. Execute applications from map double-click, on event reception, and during custom polling.
Programming Interfaces:	Proprietary object-oriented interface for C/C++ applications. SNMPc 4.0 DDE Interface. WinSNMP de-facto standard interface. Utilities for Scripting language support.

Requirements

Parameter	
CPU:	Intel 2GHz
Memory:	8GB
Disk:	10GB
Operating Systems:	Windows 2008r2, 2012, 7, 8, 10



12930 Saratoga Ave, Saratoga, CA 95070 USA

408.366.6540

sales@castlerock.com

www.castlerock.com